

## **Software Features**

### **Simple User-friendly interface**

Windows based interface, quick and easy to re-configure, suitable for most operators using routine tests.

### **Full digital display and computer control**

Utilizes proprietary testing machine Controller, with fast response and reliable data acquisition.

Features include digital zeroing of Load, Deformation and Displacement as well as PID parameter optimization

### **Manual or Program control of test process**

The Software provides multi functional control mode: Load (Stress) Control, Displacement (Stroke) Control, and Strain (Deformation) Control. Load Holding, Displacement Holding, Customized programming control, etc

In stroke control mode, the operator can define customized test speed to conform to different test standards.

Preset limit position and return position will ensure safety and return the crosshead automatically after the test has finished. In program control mode, the testing machine is controlled by conditional steps; the operator can input each condition to control the test process.

### **Multilevel Authorization Access**

The software allows different access levels to protect machine calibration parameters.

### **Diagramming functions**

Real-time graph display of the test

Zoom in or out of the test graph at any time.

Auto scale the graph according to display resolution.

Coordinates point tracing to check the test results at each point.

### **Test report creation as Excel, Word and Template**

The software provides different ways to create test reports

Single item test report

Batch test report

Customized test report

Coordinates point test report

### **Test Curves:**

Load-time

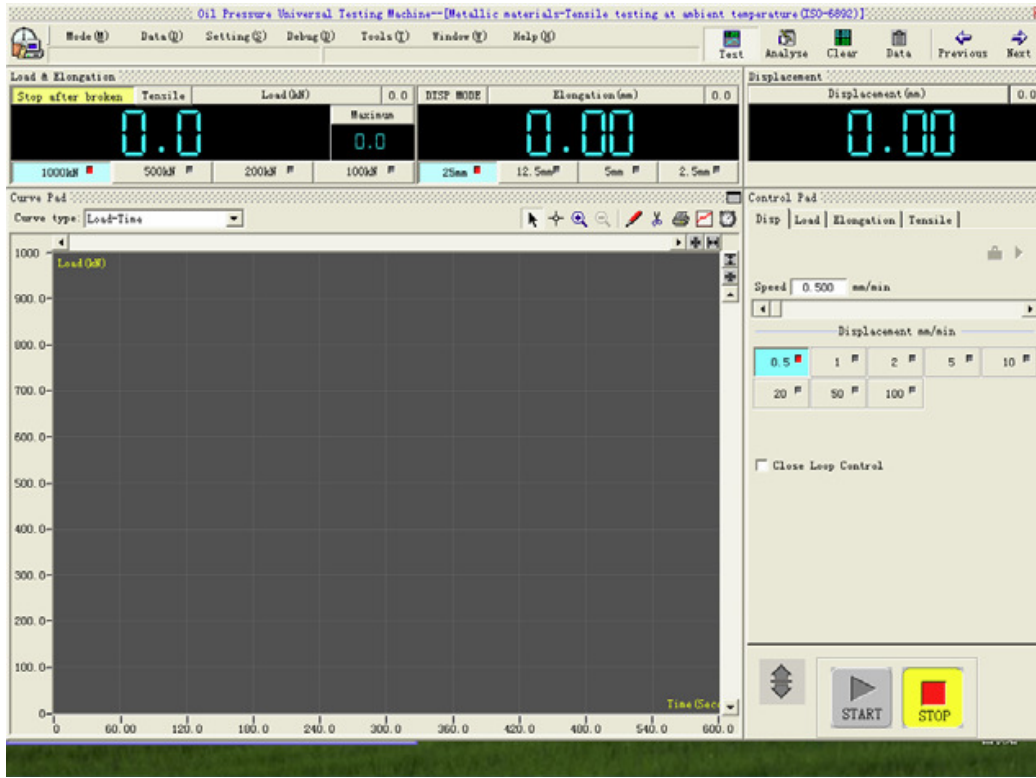
Extension-Time

Load-Extension

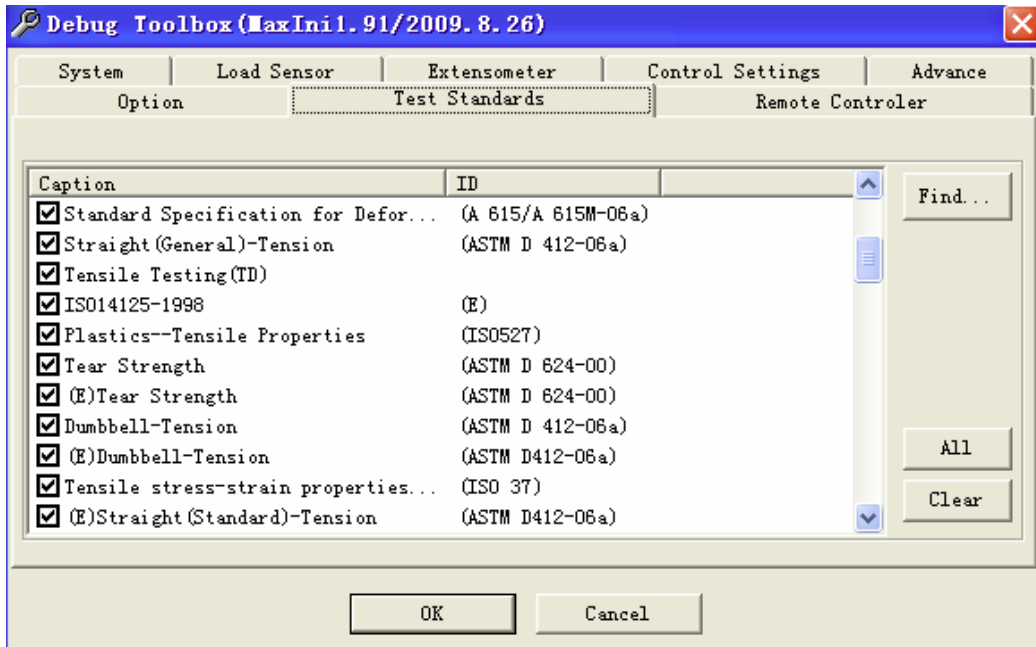
Load-Displacement

Stress-Strain

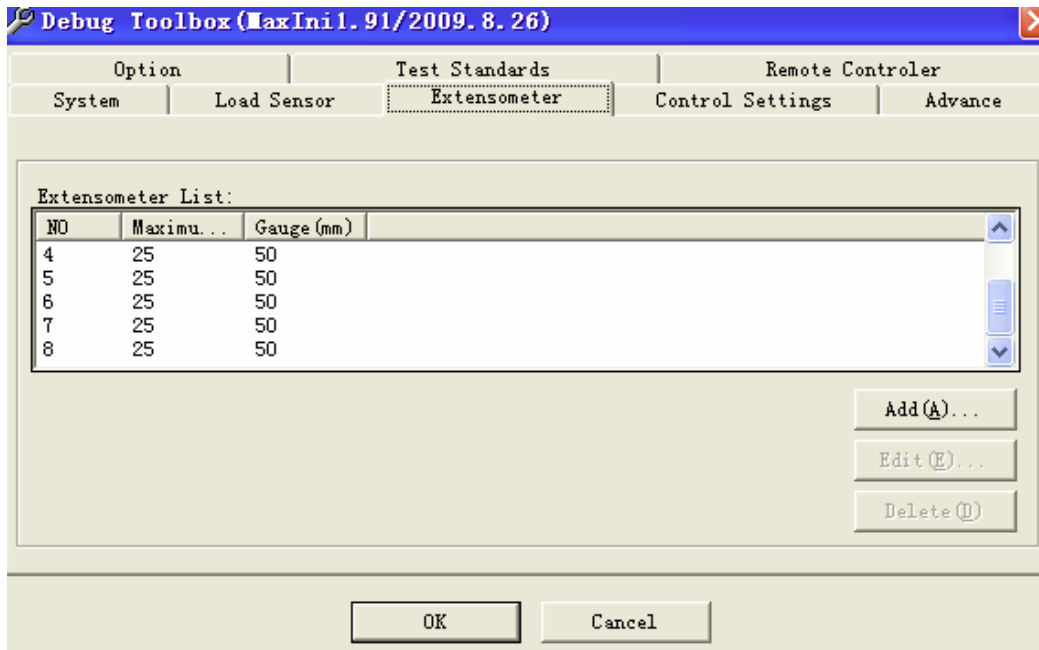
Etc



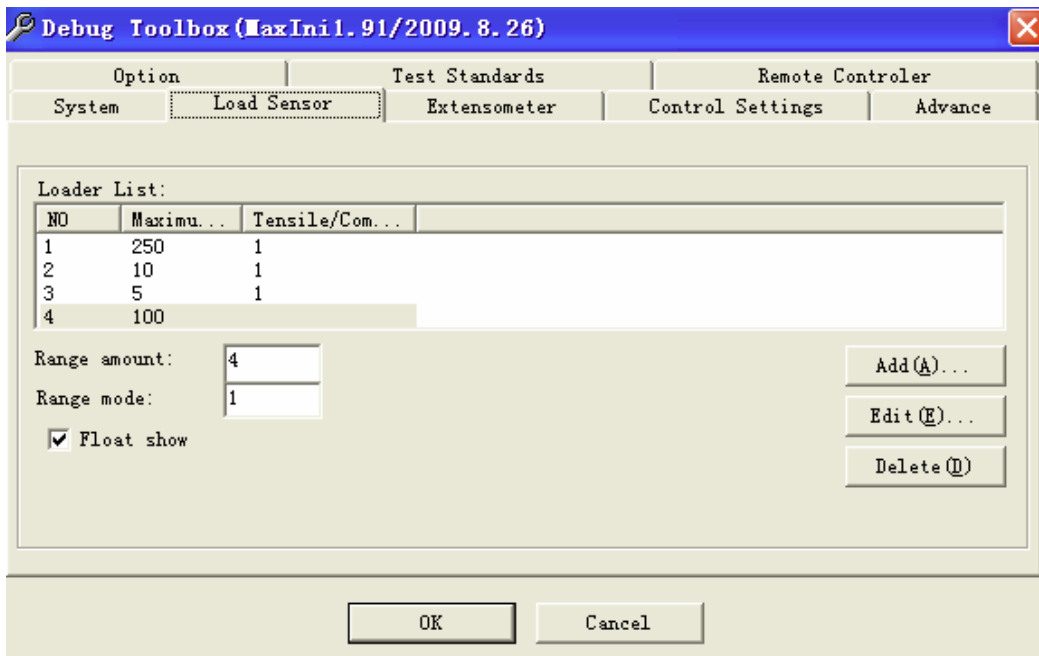
**Main Interface**



**Over 130 ASTM, ISO, DIN, etc standards are embedded**



**One machine with 8 extensometers**



**One machine with 4 Load cells**

